

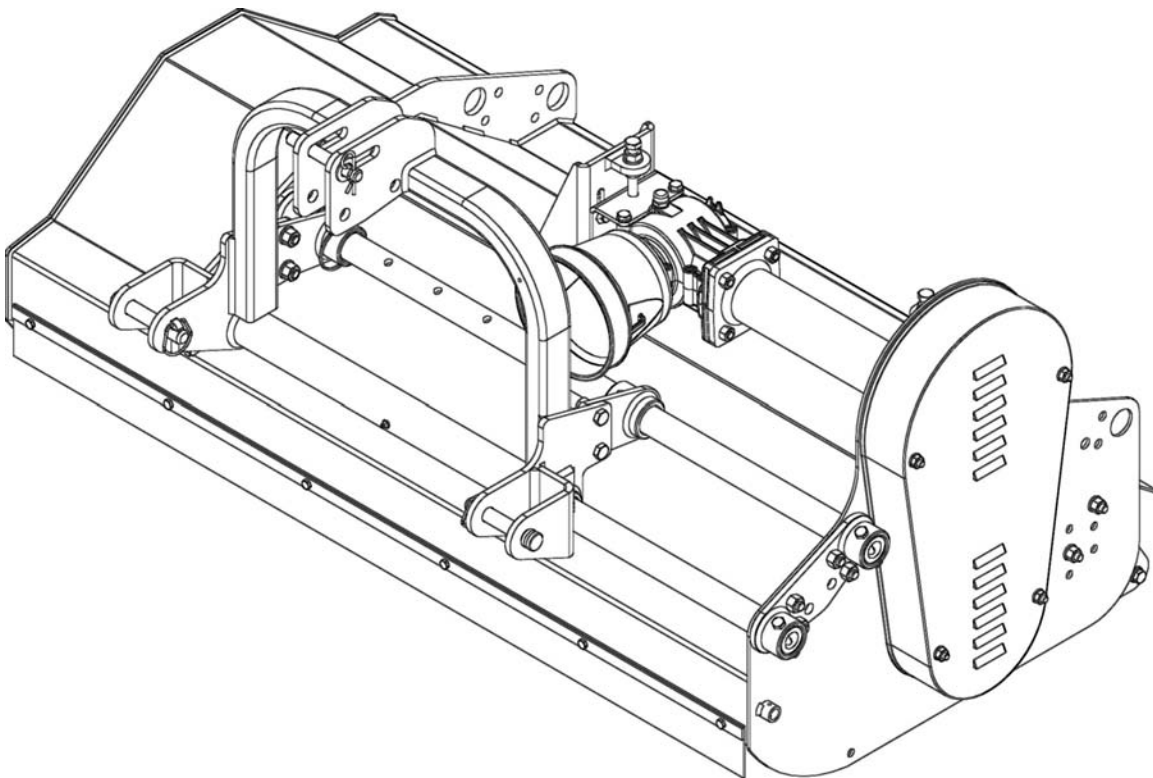
BEFCO®

Parts Manual

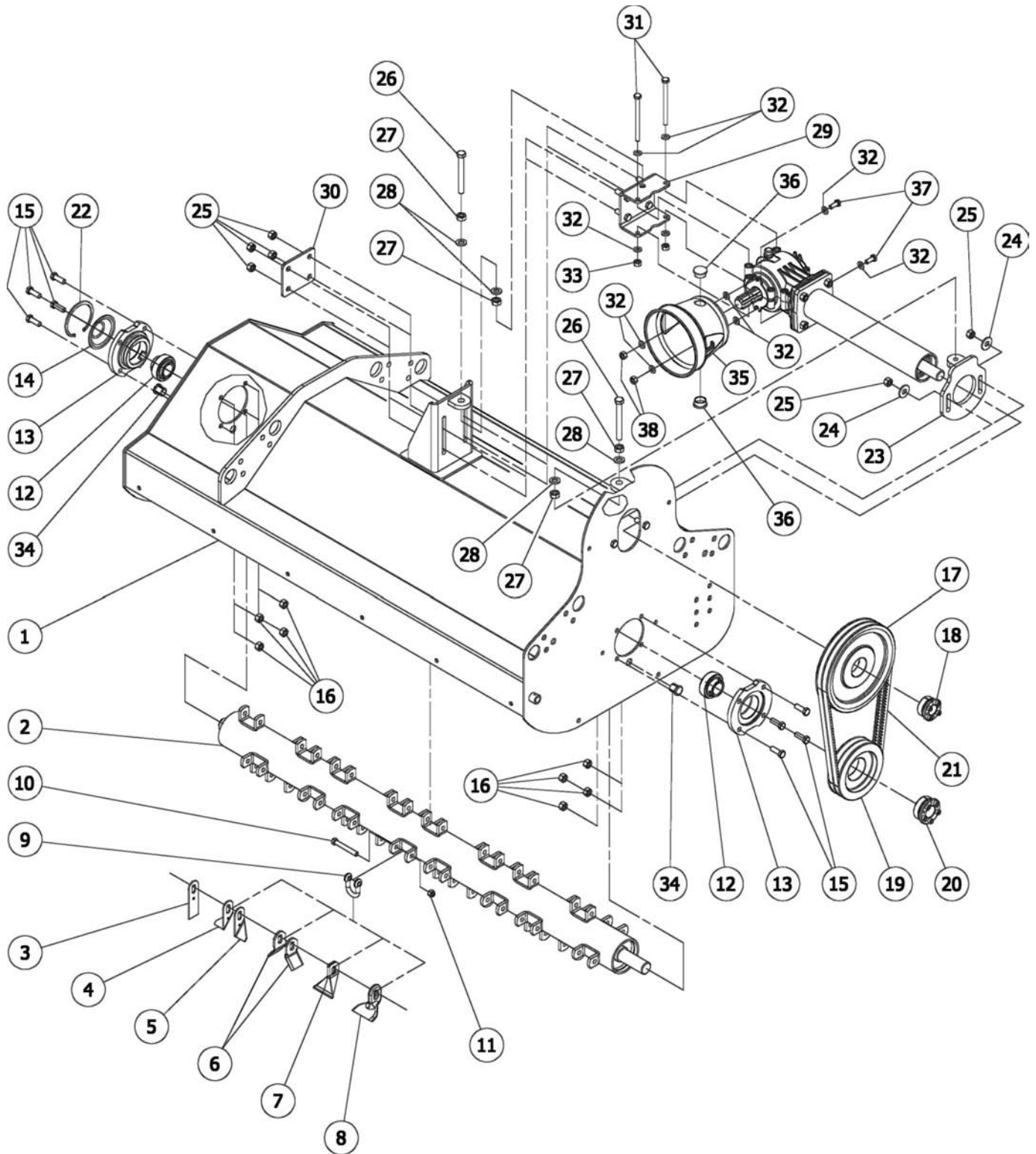
HURRICANE

Flail Mower

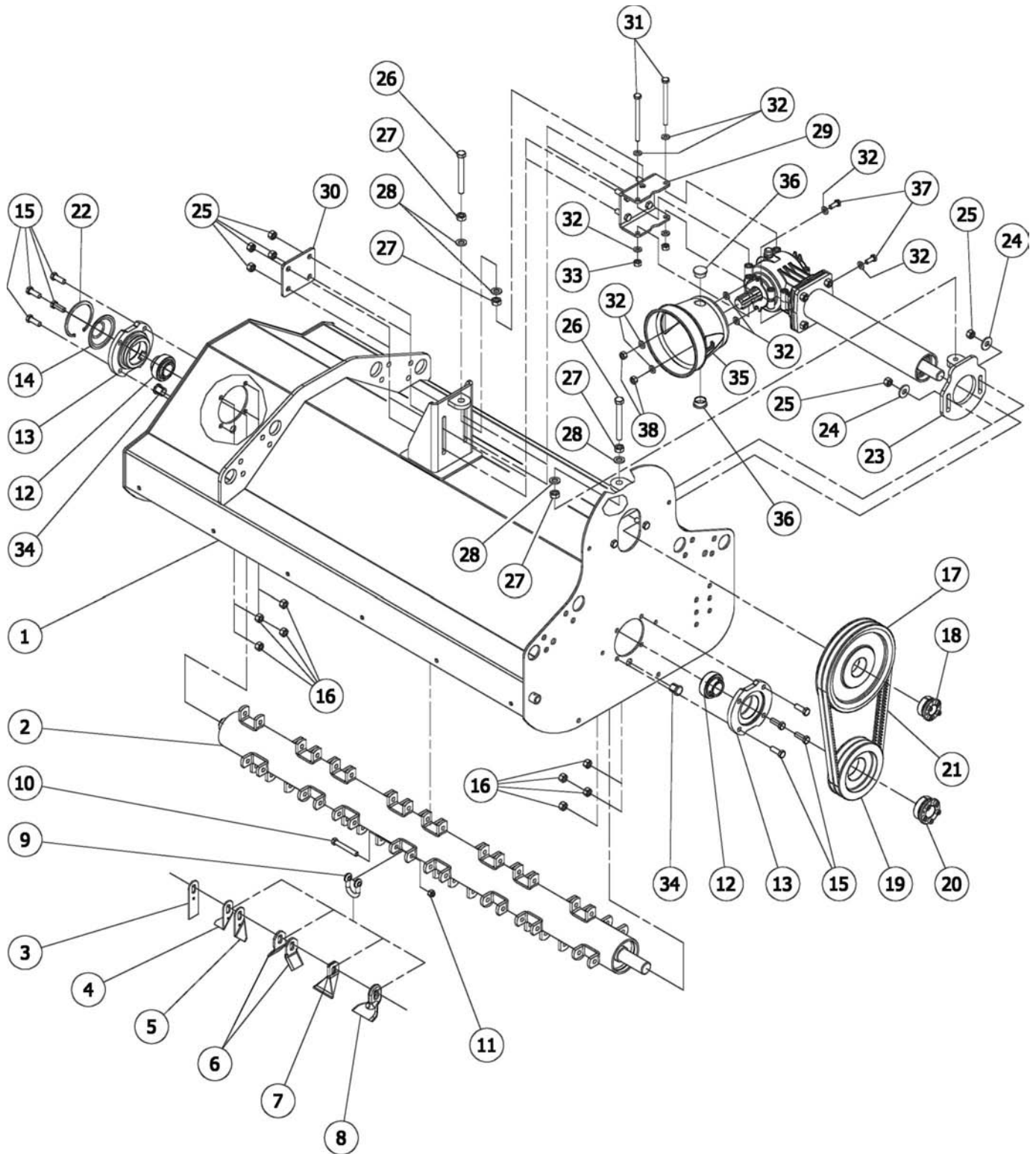
H40-S48, H40-S60, H40-S72



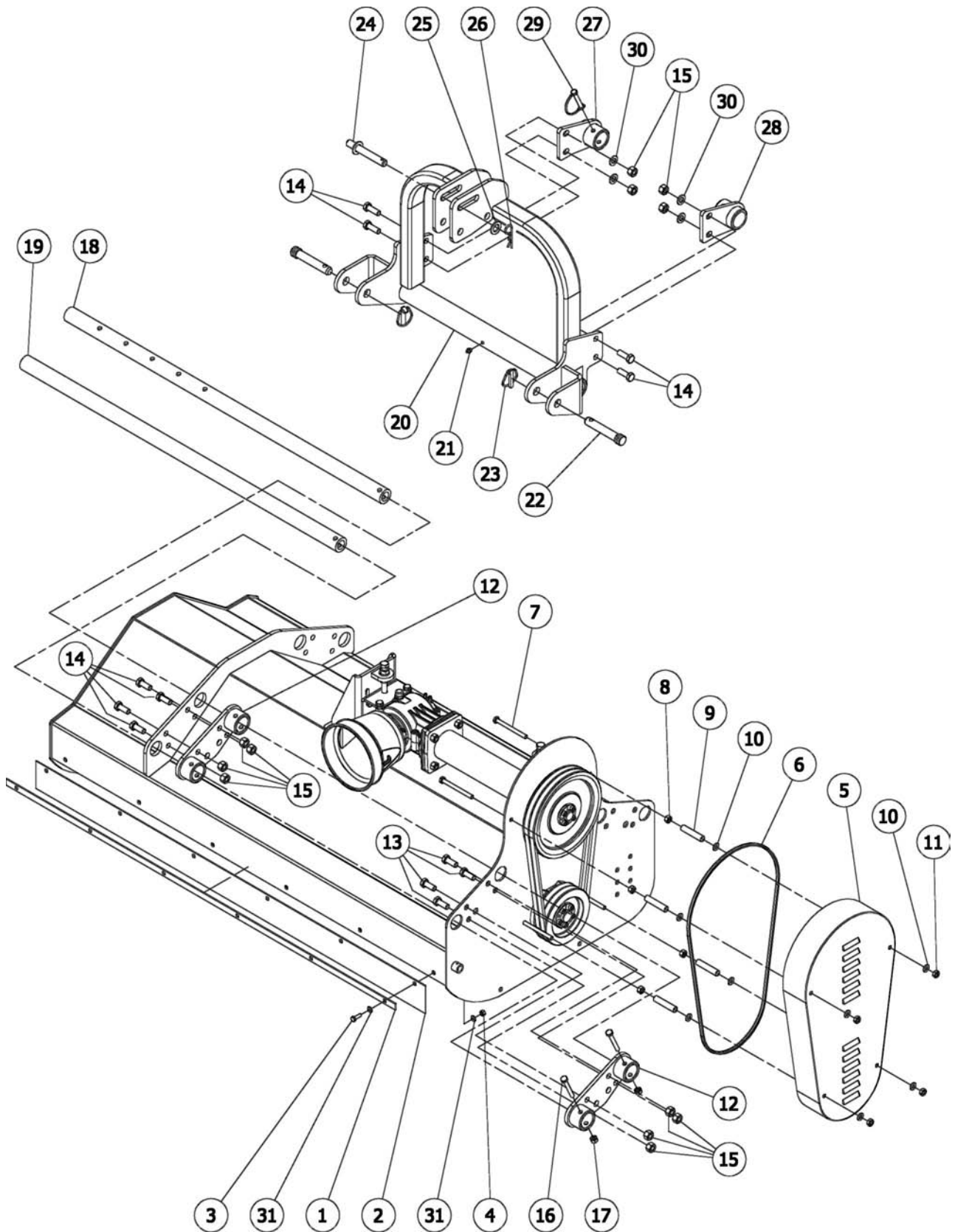
**Manual 971-418B
October 2019**



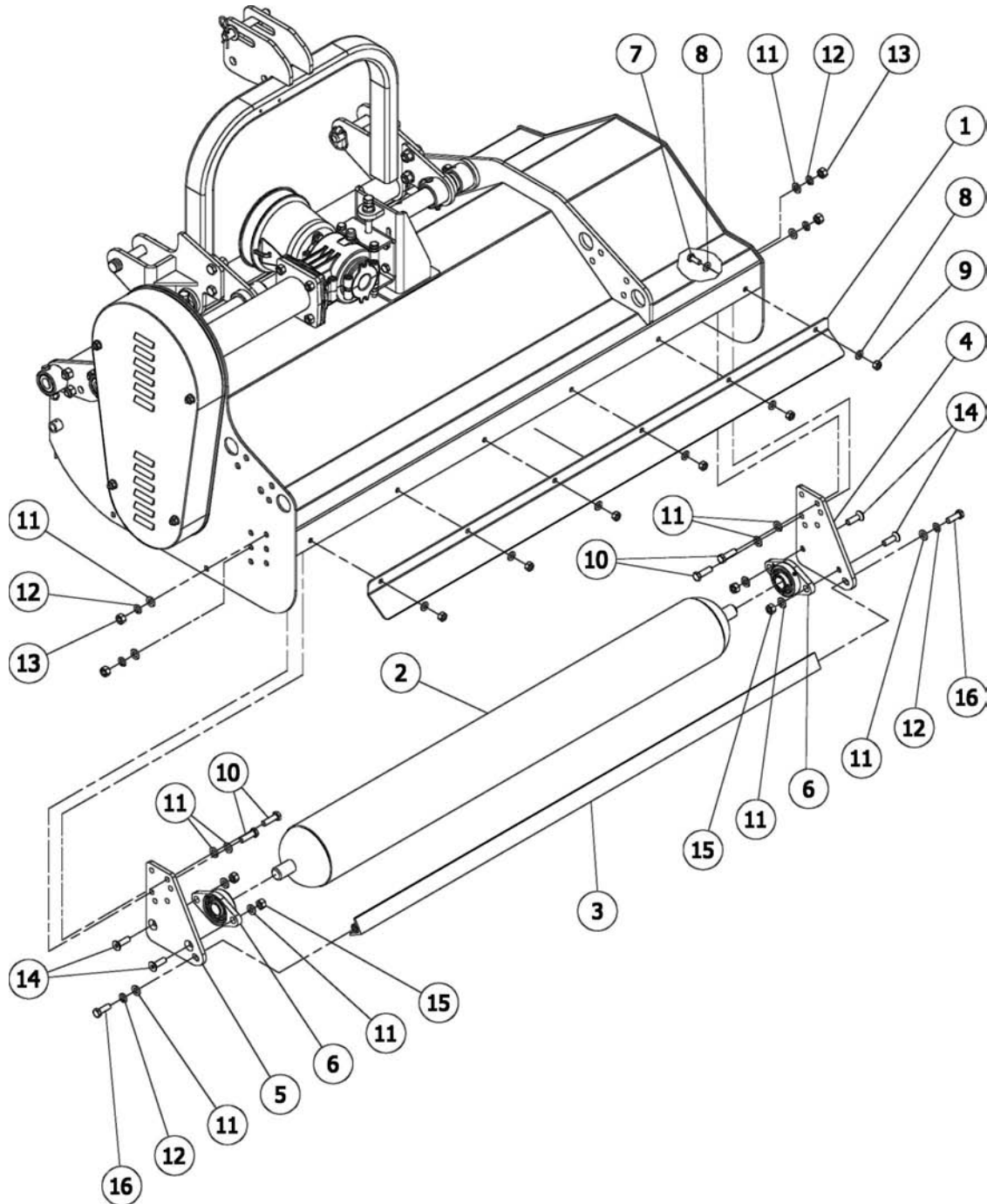
Ref.	Part #	Description	Qty.
1	015-0310	Frame 48"; H40-S48	1
	025-0310	Frame 60"; H40-S60	1
	035-0310	Frame 72"; H40-S72	1
2	015-1101	Rotor 48"; H40-S48	1
	025-1101	Rotor 60"; H40-S60	1
	035-1101	Rotor 72"; H40-S72	1
3	005-1385	Blade dethatching; H40-S48	24
	005-1385	Blade dethatching; H40-S60	32
	005-1385	Blade dethatching; H40-S72	38
4	015-2124	Blade fine cut, right; H40-S48	24
	015-2124	Blade fine cut, right; H40-S60	32
	015-2124	Blade fine cut, right; H40-S72	38
5	025-2124	Blade fine cut, left; H40-S48	24
	025-2124	Blade fine cut, left; H40-S60	32
	025-2124	Blade fine cut, left; H40-S72	38
6	005-1118	Blade "Y"; H40-S48	48
	005-1118	Blade "Y"; H40-S60	64
	005-1118	Blade "Y"; H40-S72	76
7	005-0834	Blade, paddle; H40-S48	24
	005-0834	Blade, paddle; H40-S60	32
	005-0834	Blade, paddle; H40-S72	38
8	005-1116	Blade, hammer; H40-S48	24
	005-1116	Blade, hammer; H40-S60	32
	005-1116	Blade, hammer; H40-S72	38
9	005-0106	Chain shackle round pin; H40-S48	24
	005-0106	Chain shackle round pin; H40-S60	32
	005-0106	Chain shackle round pin; H40-S72	38
10	005-0107	Bolt SP 7/16"-20x80 C10.9 N P; H40-S48	24
	005-0107	Bolt SP 7/16"-20x80 C10.9 N P; H40-S60	32
	005-0107	Bolt SP 7/16"-20x80 C10.9 N P; H40-S72	38
11	005-0108	Nut ES 7/16"-20 Z; H40-S48	24
	005-0108	Nut ES 7/16"-20 Z; H40-S60	32
	005-0108	Nut ES 7/16"-20 Z; H40-S72	38
12	005-1127	Bearing YAR 207-2RF	2
13	005-1124	Support, rotor	2
14	005-1391	Outer cover, right	1
15	000-7255	Bolt HH M12-1.75x35 C8.8 Z F	8
16	003-0064	Nut PT M12-1.75 C6 Z TK	16
17	005-2150	Pulley SPB 250x2	1
18	005-0127	Split lock bushing Ø30x55	1
19	005-2143	Pulley SPB 160x2	1
20	005-0117	Split lock bushing Ø35x65	1
21	005-1135	Belt SPBX1320	2
22	000-1087	Snap ring, inner Ø100	1
23	005-0380	Support plate, tube	1
24	007-6106	Washer fender Ø12 Z	2
25	001-3345	Nut ES M12-1.75 Z TK	6
26	005-0385	Bolt HH M14-2.00x120 C8.8 Z F	2
27	000-1177	Nut HH M14-2.00 C6 Z MD	4



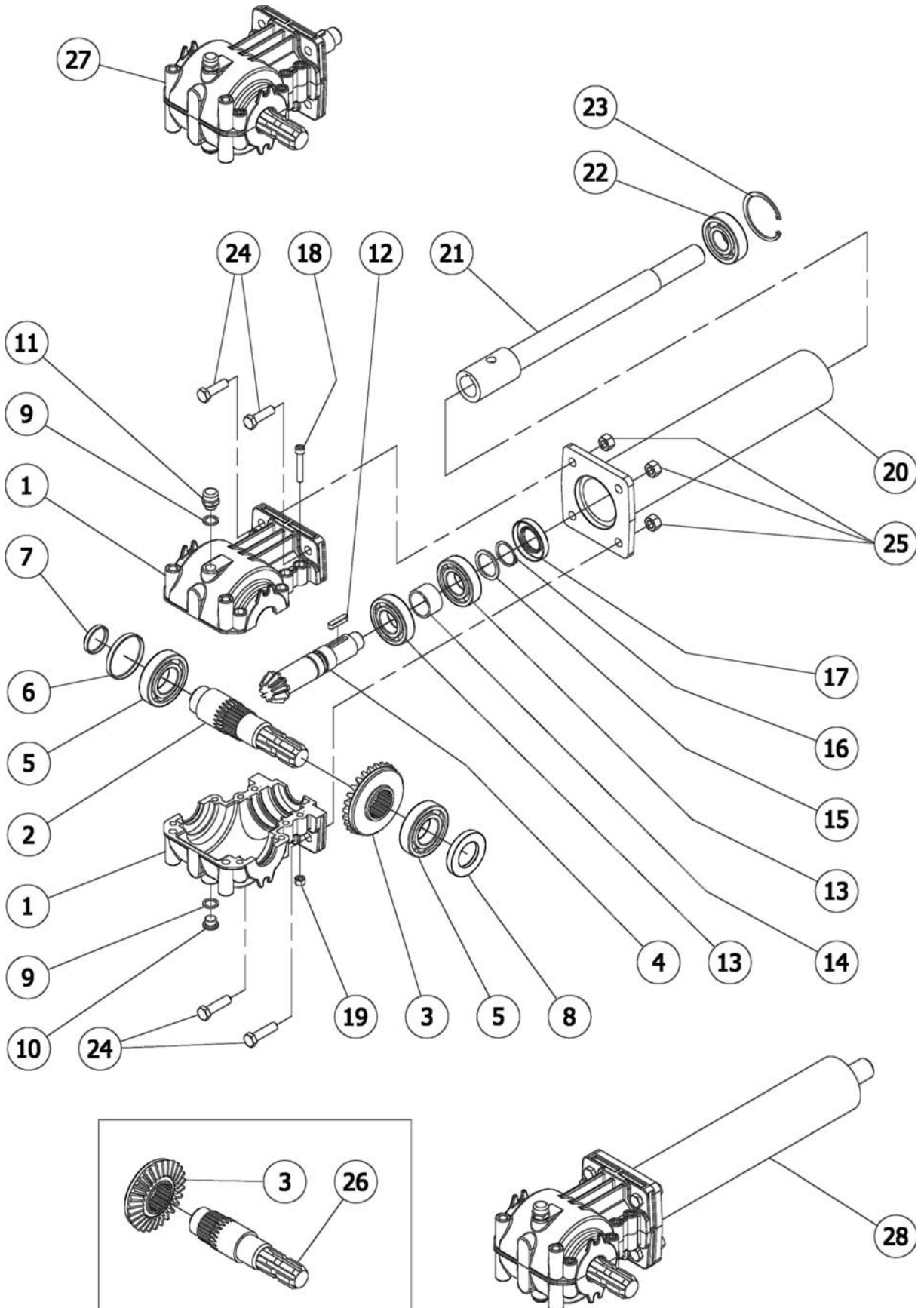
Ref.	Part #	Description	Qty.
28	009-1435	Washer flat Ø14 W	4
29	005-0390	Support plate, gearbox	1
30	005-0395	Counter plate, gearbox	1
31	010-1215	Bolt HH M10-1.50 x 140 8.8 Z P	2
32	000-2034	Washer flat Ø10 Z	10
33	003-0156	Nut PT M10-1.50 C6 Z	2
34	005-1240	Plastic cap 22 mm.	2
35	001-8038	Guard, gearbox	1
36	000-6647	Cap, guard	2
37	003-3176	Bolt HH M10-1.50x25 C8.8 Z F	2
38	000-1279	Nut HH M10-1.50 C6 Z TK	2



Ref.	Part #	Description	Qty.
1	015-2391	Support, rubber deflector 48"; H40-S48	1
	025-2391	Support, rubber deflector 60"; H40-S60	1
	035-2391	Support, rubber deflector 72"; H40-S72	1
2	015-2394	Rubber deflector 48"; H40-S48	1
	025-2394	Rubber deflector 60"; H40-S60	1
	035-2394	Rubber deflector 72"; H40-S72	1
3	004-6543	Bolt HH M08-1.25x30 C8.8 Z F; H40-S48	5
	004-6543	Bolt HH M08-1.25x30 C8.8 Z F; H40-S60	6
	004-6543	Bolt HH M08-1.25x30 C8.8 Z F; H40-S72	7
4	009-1384	Nut ES M08-1.25 Z TK; H40-S48	5
	009-1384	Nut ES M08-1.25 Z TK; H40-S60	6
	009-1384	Nut ES M08-1.25 Z TK; H40-S72	7
5	005-0400	Belt shield	1
6	005-0405	Plastic strip 1650 mm.	1
7	000-8818	Bolt HH M10-1.50x110 C8.8 Z F	4
8	000-1279	Nut HH M10-1.50 C6 TK Z	4
9	005-0403	Spacer Ø16	4
10	000-2034	Washer flat Ø10 Z	8
11	001-5237	Nut ES M10-1.50 TN Z	4
12	005-0375	Bracket, tube holder	2
13	000-1526	Bolt HH M14-2.00x35 C8.8 Z F	4
14	007-4232	Bolt HH M14-2.00x40 C8.8 Z F	8
15	003-0358	Nut PT M14-2.00 C6 Z TK	12
16	001-5232	Bolt HH M10-1.50x75 C 8.8 Z P	2
17	001-4106	Nut ES M10-1.50 Z TK	2
18	005-0370	Tube, upper guide	1
19	005-0372	Tube, lower guide	1
20	005-0340	Three point hitch	1
21	000-1065	Grease fitting M10-1.00 threaded	1
22	001-6155	Hitch pin Ø22x100 Z	2
23	001-8266	Lynch pin Ø11x45	2
24	502-933B	Pin, top hitch Ø18x140	1
25	004-6555	Washer flat Ø20 W	1
26	009-1507	Hairpin cotter Ø4	1
27	015-0360	Rear right plate, three point hitch	1
28	025-0360	Rear left plate, three point hitch	1
29	001-1333	Lynch pin Ø10x70	1
30	009-1435	Washer flat Ø14 W	4
31	001-5230	Washer flat Ø8 W; H40-S48	10
	001-5230	Washer flat Ø8 W; H40-S60	12
	001-5230	Washer flat Ø8 W; H40-S72	14

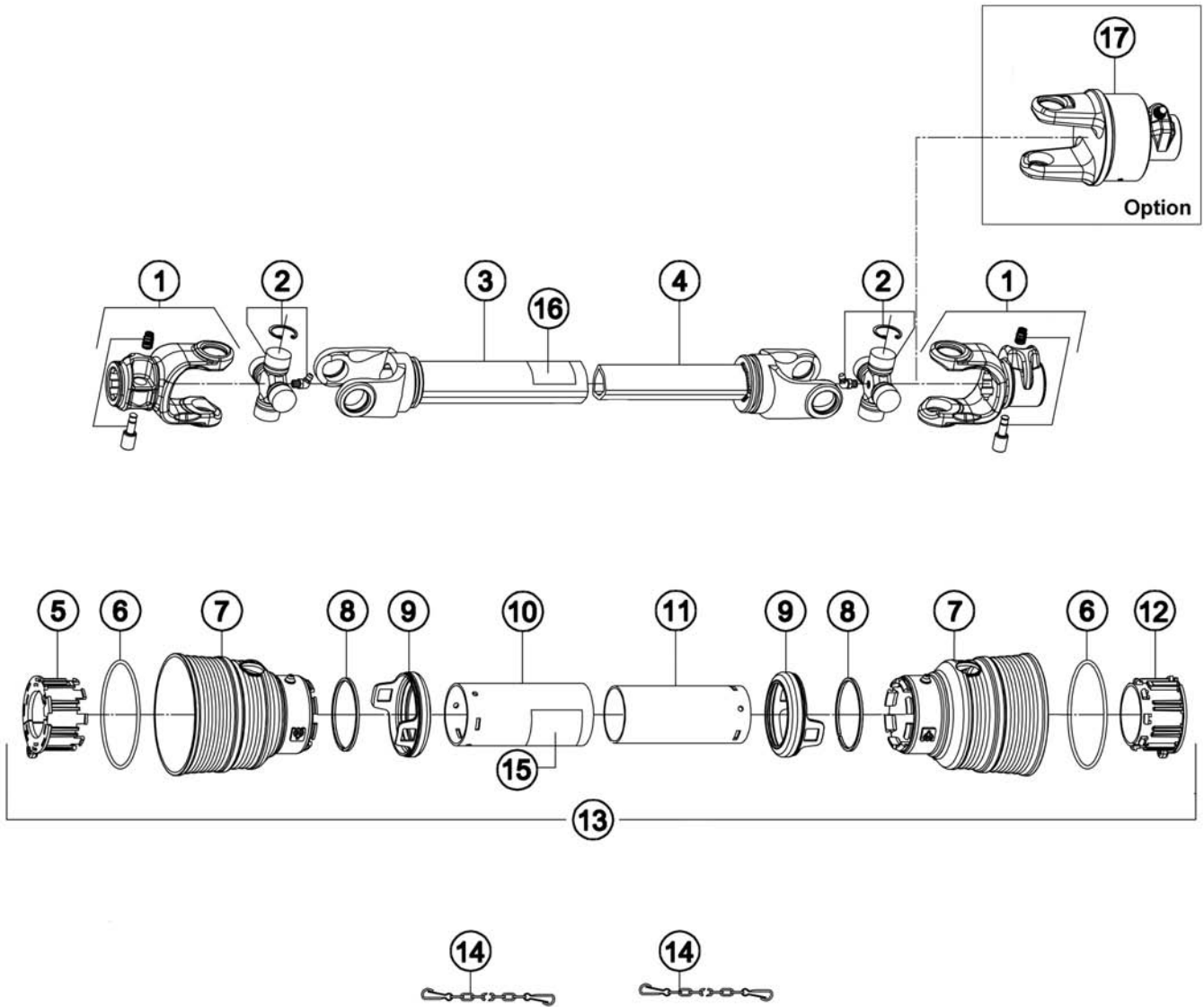


Ref.	Part #	Description	Qty.
1	015-1530	Shield, rear 48"; H40-S48	1
	025-1530	Shield, rear 60"; H40-S60	1
	035-1530	Shield, rear 72"; H40-S72	1
2	015-0420	Roller 48"; H40-S48	1
	025-0420	Roller 60"; H40-S60	1
	035-0420	Roller 72"; H40-S72	1
3	015-0425	Roller scraper 48"; H40-S48	1
	025-0425	Roller scraper 60"; H40-S60	1
	035-0425	Roller scraper 72"; H40-S72	1
4	015-0410	Roller arm, right	1
5	025-0410	Roller arm, left	1
6	003-7514A	Support UCFL206 TF	2
7	000-1278	Bolt HH M10-1.50x30 C8.8 Z F; H40-S48	5
	000-1278	Bolt HH M10-1.50x30 C8.8 Z F; H40-S60	6
	000-1278	Bolt HH M10-1.50x30 C8.8 Z F; H40-S72	7
8	000-2034	Washer flat Ø10 Z; H40-S48	14
	000-2034	Washer flat Ø10 Z; H40-S60	16
	000-2034	Washer flat Ø10 Z; H40-S72	18
9	001-4106	Nut ES M10-1.50 Z TK; H40-S48	5
	001-4106	Nut ES M10-1.50 Z TK; H40-S60	6
	001-4106	Nut ES M10-1.50 Z TK; H40-S72	7
10	003-8614	Bolt HH M10-1.50x40 C8.8 Z F	4
11	000-2265	Washer, flat Ø12x24x2 Z	14
12	000-1077	Washer lock Ø12 Z	6
13	000-3038	Nut HH M12-1.75 C6 TK Z	4
14	007-4183	Bolt CS M12-1.75x40 C10.9 Z F	4
15	003-0064	Nut PT M12-1.75 C6 Z TK	4
16	000-7255	Bolt HH M12-1.75x35 C8.8 Z F	2

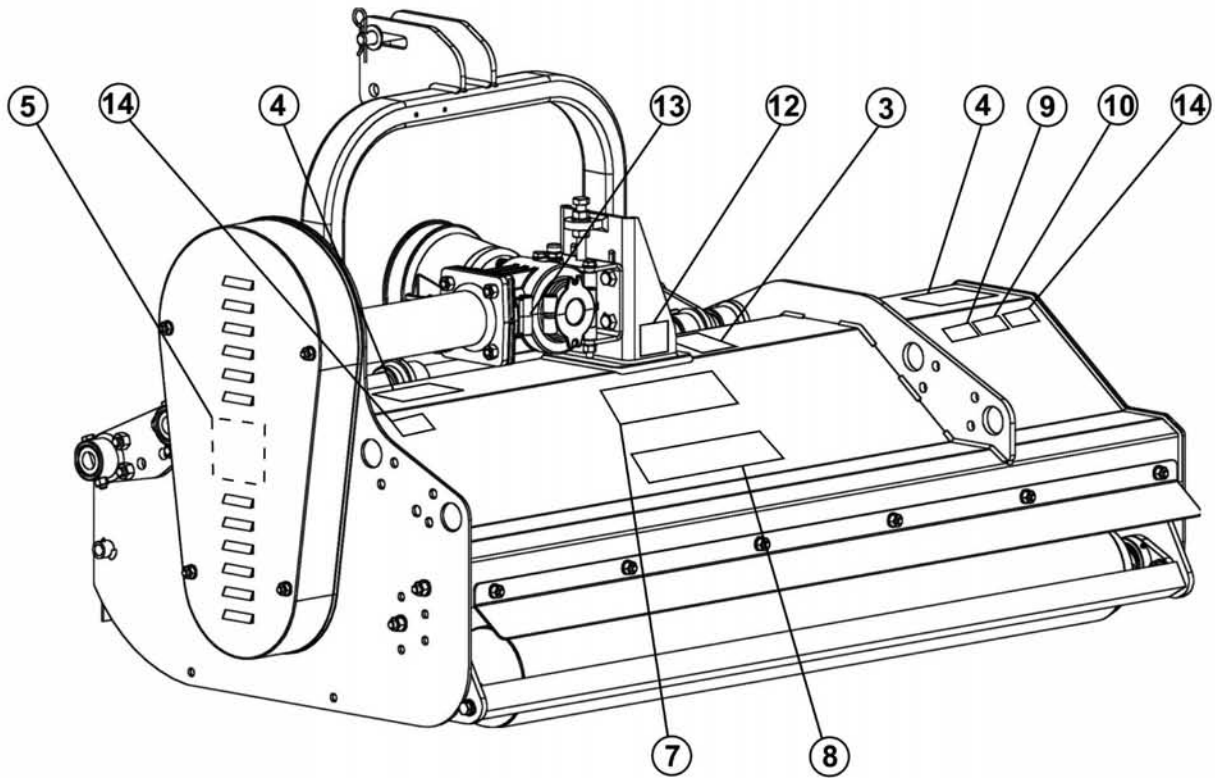
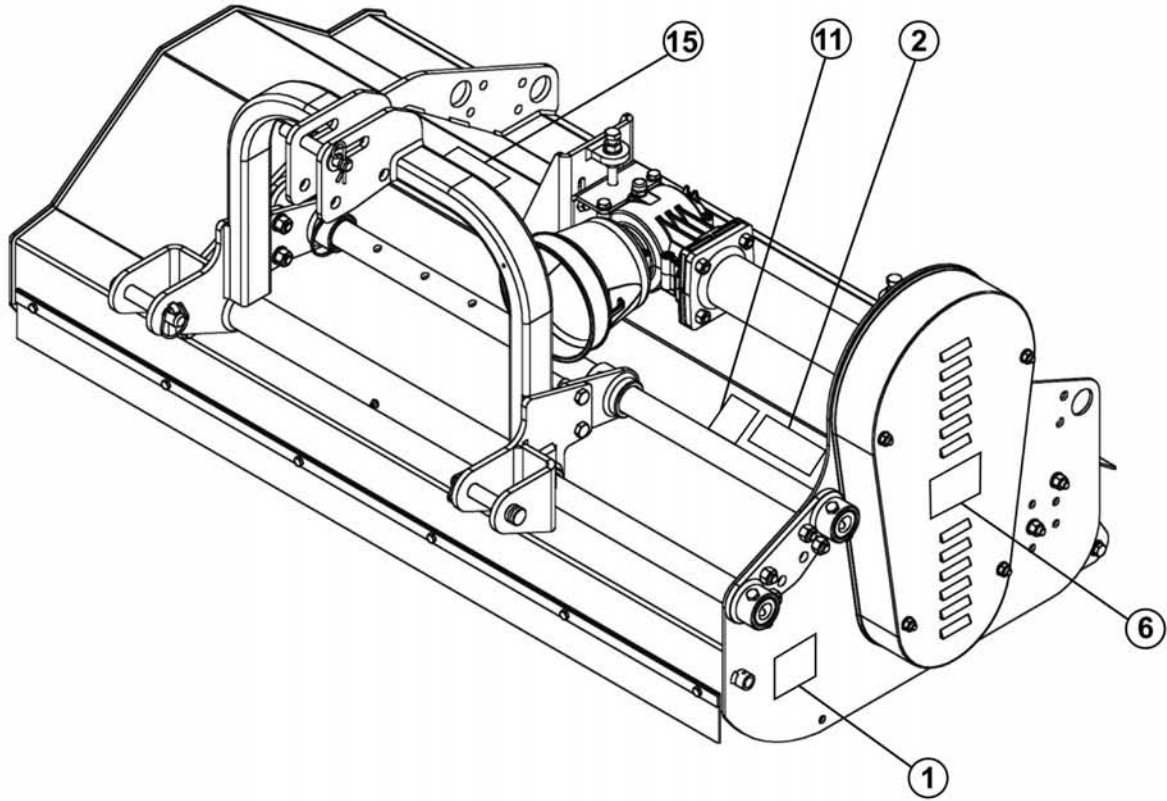


Ref.	Part #	Description	Qty.
1	001-1423	Housing, gearbox ROTO 115	2
2	005-1187	Input shaft	1
3	000-8893	Ring gear	1
4	005-0192	Pinion gear	1
5	001-2149A	Bearing 6208	2
6	000-8609	Cap	1
7	005-6683	Cap	1
8	001-0192	Oil seal 40.68.10 TC	1
9	000-8601	Gasket, breather cap	2
10	001-4459	Cap M16-1.50	1
11	001-0177	Breather cap	1
12	000-6688	Key 7x8x35	1
13	002-5332A	Bearing 6207	2
14	001-0196	Spacer	1
15	003-4196	Shim Ø35x45x2.5	1
16	004-2122	Snap ring, outer Ø35	1
17	000-2295	Oil seal 35.62.10 TC	1
18	001-0171	Bolt SC M08-1.25x50 C8.8 Z P	8
19	000-1806	Nut HH M08-1.25 C6 Z TK	8
20	015-1496	Tube, drive shaft;	1
21	015-2216	Drive shaft	1
22	005-0212A	Bearing 6306-2RS	1
23	002-5329	Snap ring, inner Ø72	1
24	002-3265	Bolt HH M12-1.75x40 C8.8 Z F	4
25	003-0064	Nut PT M12-1.75 C6 TK Z	4
26	000-8892	Input shaft, for counter clockwise rotation gearbox (option)	-
27	050-0674	Gearbox complete w/cw rotation 540 rpm, ROTO 115	1
28	015-1613	Gearbox w/drive shaft, complete	1

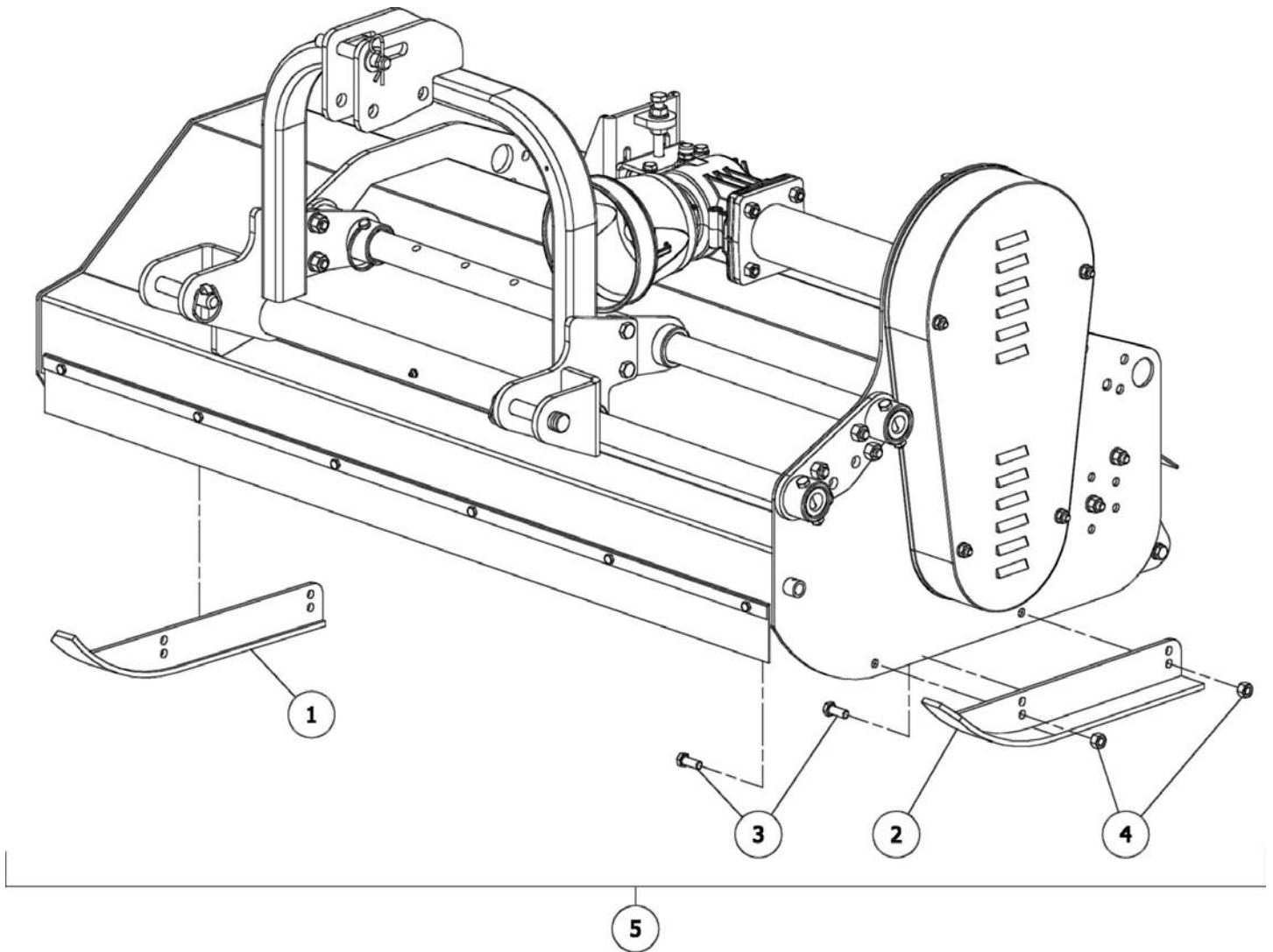
Note: Fill gearbox using approx. 20 fl.oz. (0.6 qt.) of SAE 90W gear oil.



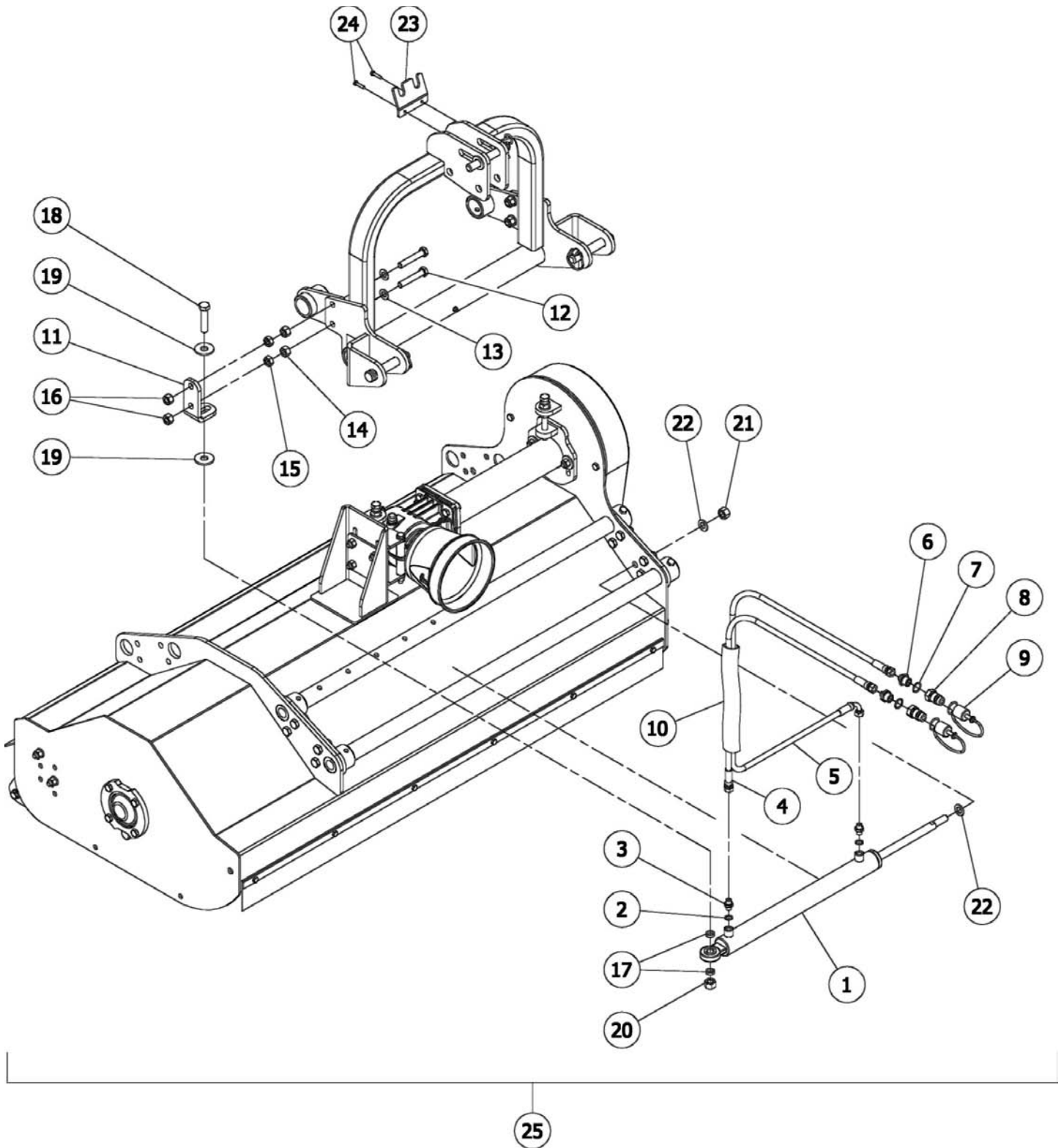
Ref.	Part #	Description	Qty.
1	1023010C	PTO yoke	2
2	1003020C	Cross w/bearing	2
3	1943042NC	Outer tube w/yoke	1
4	1953044NC	Inner tube w/yoke	1
5	1784710C	Locking ring, outer tube	1
6	1211733C	Stiffening ring	2
7	1781703C	Standard cone	2
8	1211735C	Safety ring	2
9	1881709C	Safety sleeve	2
10	1773040C	Shield, outer tube	1
11	1872040C	Shield, inner tube	1
12	1784711C	Locking ring, inner tube	1
13	96SS4040C	Shield, complete	1
14	1006065C	Chain, antirotation	2
15	950-463B	Decal "DANGER - Rotating driveline, keep away" outer shield	1
16	950-464B	Decal "DANGER - Guard missing, do not operate" outer tube	1
17	1503260C	Overrunning clutch (option)	1
	050-0437	Driveline, complete	-



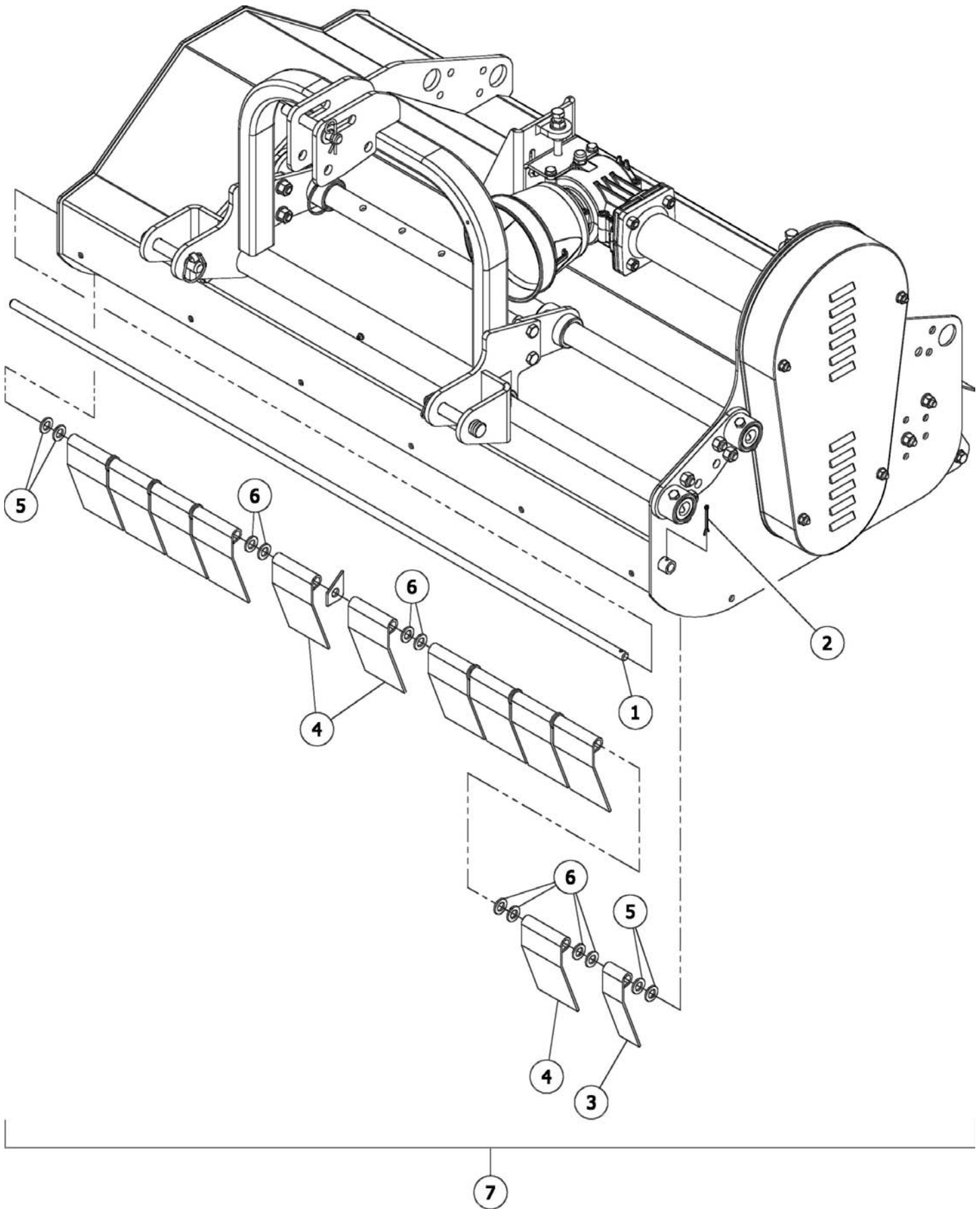
Ref.	Part #	Description	Qty.
1	950-486B	Decal "DANGER - Moving parts hazard"	1
2	950-109B	Decal "DANGER - Avoid injury from PTO"	1
3	950-111B	Decal "CAUTION - To avoid serious injury"	1
4	950-209B	Decal "DANGER - Rotating blades hazard"	2
5	950-213B	Decal "DANGER - Replace shield"	1
6	950-103B	Decal "B"	1
7	950-107B	Decal "BEFCO"	1
8	950-968B	Decal "Hurricane"	1
9	950-279B	Decal "H40"	1
10	950-971B	Decal "S48"	1
	950-972B	Decal "S60"	1
	950-973B	Decal "S72"	1
11	950-940B	Decal "Quick Hitch Compatible"	1
12	937-0160	Decal "Side-shift"	1
13	937-0226	Decal "Oil level"	1
14	950-366B	Red reflective decal	2
15	---	Decal, serial number	1
	971-417B	Operator's Manual Hurricane Flail Mower H40-S48, S60, S72	1
	971-418B	Parts Manual Hurricane Flail Mower H40-S48, S60, S72	1



Ref.	Part #	Description	Qty.
1	015-0500	Skid, right	1
2	025-0500	Skid, left	1
3	001-5255	Bolt HH M12-1.75x30 C8.8 Z F	4
4	003-0064	Nut PT M12-1.75 C6 Z TK	4
5	009-9206	Side skids, complete	1



Ref.	Part #	Description	Qty.
1	006-3366	Hydraulic cylinder	1
2	005-2438	Washer copper sealing 1/4"	2
3	008-2484	Adaptor STR 1/4" MBSPPx1/4" MBSPP	2
4	006-3390	Hose 2550 mm.	1
5	006-3389	Hose 2850 mm.	1
6	008-2488	Adaptor STR 1/4" MBSPPx1/2" MBSPP	2
7	003-6532	Washer copper sealing 1/2"	2
8	004-1871	1/2" Male quick coupler 1/2" FBSPP	2
9	006-3396	Rubber cap	2
10	006-3398	Hose sleeve	1
11	005-0510	Mounting bracket, cylinder	1
12	008-0150	Bolt HH M14-2.00x75 C8.8 Z F	2
13	009-1435	Washer flat Ø14 Z	2
14	000-1019	Nut HH M14-2.00 C6 Z TK	2
15	000-1177	Nut HH M14-2.00 C6 Z MD	2
16	003-0358	Nut PT M14-2.00 C6 Z TK	2
17	005-0519	Spacer Ø21.3	2
18	003-0309	Bolt HH M16-2.00x70 C8.8 Z F	1
19	009-5152	Washer fender Ø16 Z	2
20	002-6314	Nut ES M16-2.00 Z TK	1
21	002-0105	Nut ES M16-1.50 Z TK	1
22	000-8568	Washer flat Ø16	2
23	006-3044	Plate, hydraulic hose retainer	1
24	005-8097	Self tapping screw HH M6.3x30 Z	2
24	009-9207	Hydraulic cylinder kit, complete	1



Ref.	Part #	Description	Qty.
1	015-0550	Deflector rod 48"; H40-S48	1
	025-0550	Deflector rod 60"; H40-S60	1
	035-0550	Deflector rod 72"; H40-S72	1
2	011-2087	Cotter pin Ø4x50 Z	1
3	006-3350	Deflector, narrow; H40-S48	1
4	006-3348	Deflector; H40-S48	11
	006-3348	Deflector; H40-S60	14
	006-3348	Deflector; H40-S72	17
5	000-8568	Washer flat Ø16 Z; H40-S60	4
6	000-8568	Washer flat Ø16 Z; H40-S48	20
	000-8568	Washer flat Ø16 Z; H40-S60	24
	000-8568	Washer flat Ø16 Z; H40-S72	30
7	009-9208	Front steel deflector kit, complete; H40-S48	1
	009-9209	Front steel deflector kit, complete; H40-S60	1
	009-9210	Front steel deflector kit, complete; H40-S72	1

Use only original spare parts

All rights reserved. It is unlawful to copy, reprint or use any of the information or details in this manual without the expressed written permission of the Company. Technical information provided in this manual is approximate, the Company reserves the right to modify or improve the models shown for technical or commercial purposes. Pictures in this manual do not necessarily show the machine as delivered.

BEFCO[®]

P.O. Box 6036
Rocky Mount, NC 27802-6036
Tel.: 252.977.9920 - Fax: 252.977.9718
www.befco.com

